








REAL ESTATE MAP

Gracemark, LLC
Tuckahoe Road Tract
Pender County, NC

Legend

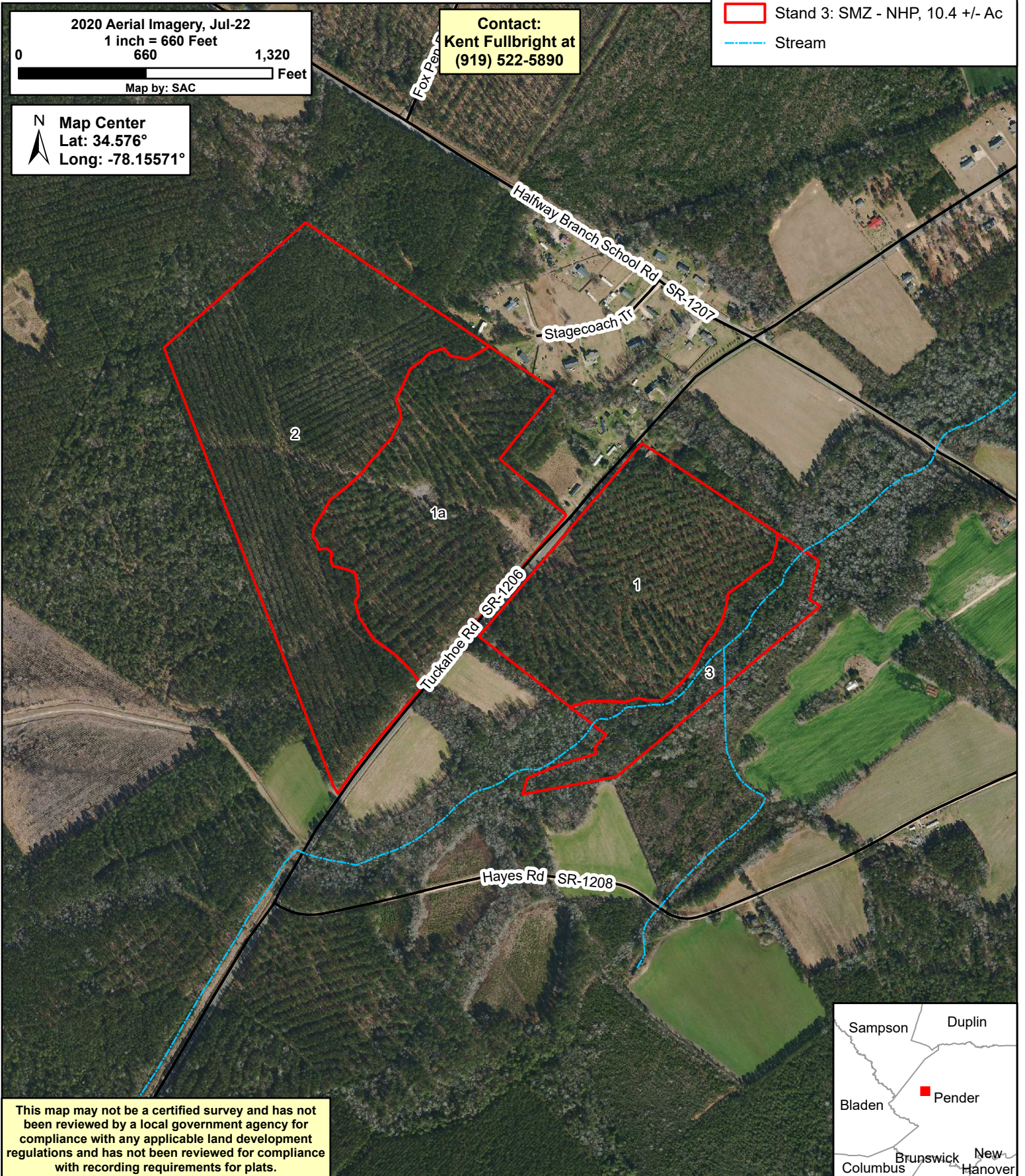
PIN # 2350-32-3541 (113.6 +/- Ac)

-  Stand 1: NPH21, 27.1 +/- Ac
-  Stand 1a: NPH21, 29.2 +/- Ac
-  Stand 2: PLB96T1, 46.9 +/- Ac
-  Stand 3: SMZ - NHP, 10.4 +/- Ac
-  Stream

2020 Aerial Imagery, Jul-22
1 inch = 660 Feet
0 660 1,320 Feet
Map by: SAC

Contact:
Kent Fullbright at
(919) 522-5890

N Map Center
Lat: 34.576°
Long: -78.15571°



This map may not be a certified survey and has not been reviewed by a local government agency for compliance with any applicable land development regulations and has not been reviewed for compliance with recording requirements for plats.

